

Incremental growth of therizinosaurian dental tissues: implications for dietary transitions in Theropoda

Khai Button^{1,2}, Hailu You^{3,4}, James I. Kirkland⁵ and Lindsay Zanno^{1,2}

¹ Department of Biological Sciences, North Carolina State University, Raleigh, NC, United States of America

² Paleontology, North Carolina Museum of Natural Sciences, Raleigh, NC, United States of America

³ Key Laboratory of Vertebrate Evolution and Human Origins of Chinese Academy of Sciences, Institute of Vertebrate Paleontology and Paleoanthropology, Chinese Academy of Sciences, Beijing, China

⁴ College of Earth Sciences, University of Chinese Academy of Sciences, Beijing, China

⁵ Utah Geological Survey, Salt Lake City, UT, United States of America

ABSTRACT

Previous investigations document functional and phylogenetic signals in the histology of dinosaur teeth. In particular, incremental lines in dentin have been used to determine tooth growth and replacement rates in several dinosaurian clades. However, to date, few studies have investigated the dental microstructure of theropods in the omnivory/herbivory spectrum. Here we examine dental histology of Therizinosauria, a clade of large-bodied theropods bearing significant morphological evidence for herbivory, by examining the teeth of the early-diverging therizinosaurian *Falcarius utahensis*, and an isolated tooth referred to *Suzhousaurus megatherioides*, a highly specialized large-bodied representative. Despite attaining some of the largest body masses among maniraptoran theropod dinosaurs, therizinosaurian teeth are diminutive, measuring no more than 0.90 cm in crown height (CH) and 0.38 cm in crown base length (CBL). Comparisons with other theropods and non-theropodan herbivorous dinosaurs reveals that when controlling for estimated body mass, crown volume in therizinosaurians plots most closely with dinosaurs of similar dietary strategy as opposed to phylogenetic heritage. Analysis of incremental growth lines in dentin, observed in thin sections of therizinosaurian teeth, demonstrates that tooth growth rates fall within the range of other archosaurs, conforming to hypothesized physiological limitations on the production of dental tissues. Despite dietary differences between therizinosaurians and hypercarnivorous theropods, the types of enamel crystallites present and their spatial distribution—i.e., the schmelzmuster of both taxa—is limited to parallel enamel crystallites, the simplest form of enamel and the plesiomorphic condition for Theropoda. This finding supports previous hypotheses that dental microstructure is strongly influenced by phylogeny, yet equally supports suggestions of reduced reliance on oral processing in omnivorous/herbivorous theropods rather than the microstructural specializations to diet exhibited by non-theropodan herbivorous dinosaurs. Finally, although our sample is limited, we document a significant reduction in the rate of enamel apposition contrasted with increased relative enamel thickness between early and later diverging therizinosaurians that coincides with anatomical evidence for increased specializations to herbivory in the clade.

Submitted 27 July 2017

Accepted 14 November 2017

Published 11 December 2017

Corresponding author

Khai Button, kabutton@ncsu.edu

Academic editor

Fabien Knoll

Additional Information and
Declarations can be found on
page 16

DOI 10.7717/peerj.4129

© Copyright
2017 Button et al.

Distributed under
Creative Commons CC-BY 4.0

OPEN ACCESS

Subjects Paleontology, Anatomy and Physiology, Dentistry, Histology

Keywords Dinosaur teeth, Therizinosauria, Von ebner, Dentin, Enamel microstructure, Histology, Tooth growth

INTRODUCTION

Previous research has identified functional and phylogenetic signals in the dental microstructure of many extant and extinct amniotes (*Johnston, 1979*). Of the four major tissue components of teeth (enamel, dentin, cementum, and pulp), dentin has received the most attention in recent years due to the presence and (in the case of fossil specimens) preservation of daily von Ebner lines (VELs), which represent incremental tissue production and can be used to glean paleobiological data (*Dean et al., 1993; Erickson, 1996a; Erickson, 1996b; D’Emic et al., 2013*). For example, counting the number of VELs and measuring the average increment widths has yielded calculations of tooth growth and replacement rates in fossil hominids (*Dean, 2006*), dinosaurs (*Erickson, 1996b; Sereno et al., 2007; D’Emic et al., 2013; García & Zurriaguz, 2016; Erickson et al., 2017*), and other extinct taxa (*Scheyer & Moser, 2011; Heckert & Miller-Camp, 2013*). These trajectories can in turn be linked to a variety of macroevolutionary trends including gigantism in hypercarnivorous theropods (*Erickson, 1996b*) and the evolution of dental batteries in megaherbivorous ornithischians and sauropodomorphs (*Upchurch & Barrett, 2000; Sereno et al., 2007; D’Emic et al., 2013; Barrett, 2014; Button et al., 2015; Erickson et al., 2015; García & Zurriaguz, 2016*) to better understand the relationship between dentition and other facets of dinosaurian paleobiology. However, information on tooth growth can also be derived from cementum and enamel as these tissues also exhibit incremental growth lines (Lines of incremental growth, LIGs). Of these, enamel, as the most biomineralized vertebrate tissue, is more resistant to taphonomic alteration and allows for exceptional preservation of microstructure. Additionally, the presence of LIGs is one of the defining structural features of reptilian enamel (*Sander, 1999; Sander, 2000*). Also known as striae of Retzius, LIGs have been identified in a variety of extant and extinct amniotes; they have been extensively studied in prismatic mammalian dental enamel (*Bromage & Dean, 1985; Dauphin, Jaeger & Osmolska, 1988; Dean & Scandrett, 1996; Dean, 2000*), yet also explored in diapsids (*Buffetaut et al., 1986; Bocherens, Brinkman & Dauphin, 1994; Line, 2000; Heckert & Miller-Camp, 2013*). In mammals, LIGs represent long-period circaseptan amelogenesis (*Dean et al., 1993; Dean, 1998; FitzGerald, 1998*). However, the molecular mechanisms controlling LIG periodicity in diapsid teeth are incompletely understood. Nevertheless, previous work documents that they are a biologically meaningful indicator of incremental growth of dental tissues (*Appenzeller et al., 2005*).

Here we use dental histology (including incremental lines in both dentin and enamel) to explore trends in the dental evolution of Therizinosauria, a large-bodied clade of theropod dinosaurs widely regarded to fall on the omnivory/herbivory spectrum (*Zanno et al., 2009; Zanno et al., 2016; Zanno, 2010a; Lautenschlager, 2017*). Few studies have investigated evolutionary trends in the dental microstructure of theropod dinosaurs within the omnivory/herbivory spectrum, primarily because: (1) most theropod taxa hypothesized

to have at least a facultatively herbivorous diet ultimately evolve edentulism, rendering dental comparisons between early and late diverging members difficult to derive, and (2) early diverging species in clades that do retain teeth are generally represented by rare and highly significant specimens that cannot be destructively sampled. Therizinosaurians, by contrast, retain teeth throughout the evolution of the clade, and alterations in tooth morphology and reductions in crown volume in later-diverging members have been identified as ecomorphological correlates of transitions to herbivory ([Zanno et al., 2009](#); [Zanno & Makovicky, 2011](#)).

Given the diminutive tooth size documented in several therizinosaurian taxa, we also determine the effect of diet and relative crown volume in dinosaurs. We quantify the relationship between tooth and body size, and assess microstructure and incremental growth in both dentin and enamel of the early-diverging therizinosaurian *Falcarius utahensis*, recovered from a monodominant Lower Cretaceous bonebed in western North America, and *Suzhousaurus megatherioides*, a specialized non-therizinosaurid therizinosaurid from the Lower Cretaceous Xinminpu Group of China. We compare these structures to previously published records of archosaur teeth spanning carnivorous theropods, herbivorous non-theropodan dinosaurs, and crocodylians to assess patterns in enamel and dentin microstructure and crown volume to body mass ratios that may yield insight into the dietary and morphological evolution of the clade. By investigating trends in the microstructure of therizinosaurian dentition, we further efforts to unravel the impact of various tooth growth/replacement strategies on the evolution of key morphological and dietary transitions in Dinosauria.

METHODS AND MATERIALS

Definitions

Enamel microstructure studies were hampered by disagreement on terminology and usage preceding the definitions laid out by [Sander \(1999\)](#), [Sander \(2000\)](#). Tooth terminology follows [Sander \(1999\)](#), [Sander \(2000\)](#), [Smith & Dodson \(2003\)](#) and [Hendrickx, Mateus & Araújo \(2015a\)](#). The schmelzmuster of a tooth is defined as the enamel types present and their spatial distribution in the enamel cap. Parallel crystallite enamel is the simplest and most basal enamel type and is highly conserved in Sauropsida ([Sander, 1999](#); [Hwang, 2005](#); [Hwang, 2011](#)). When viewed in longitudinal and transverse section ([Erickson, 1996b](#); [Serenó et al., 2007](#)), apatite crystallites run perpendicular to the outer enamel surface (OES) and are tightly packed and highly disorganized. Columnar enamel consists of crystallites that form diverging stacks, separated from each other by zones of convergence ([Koenigswald & Sander, 1997](#); [Sander, 1999](#)). Additional terminologies differentiating volume-independent tissue deposition/apposition rate from overall tooth growth rate/time were coined for this study, and were adapted from [Erickson \(1996a\)](#), [Erickson \(1996b\)](#) and [Line \(2000\)](#) and are defined as follows: tooth formation time (TFT) is the number of days (equivalent to VEL count) present in thin section (“growth rate” *sensu* [Erickson, 1996a](#); [Erickson, 1996b](#)). Tooth growth rate (TGR) is defined as the crown volume (in ml) divided by the tooth formation time. Dentin deposition rate

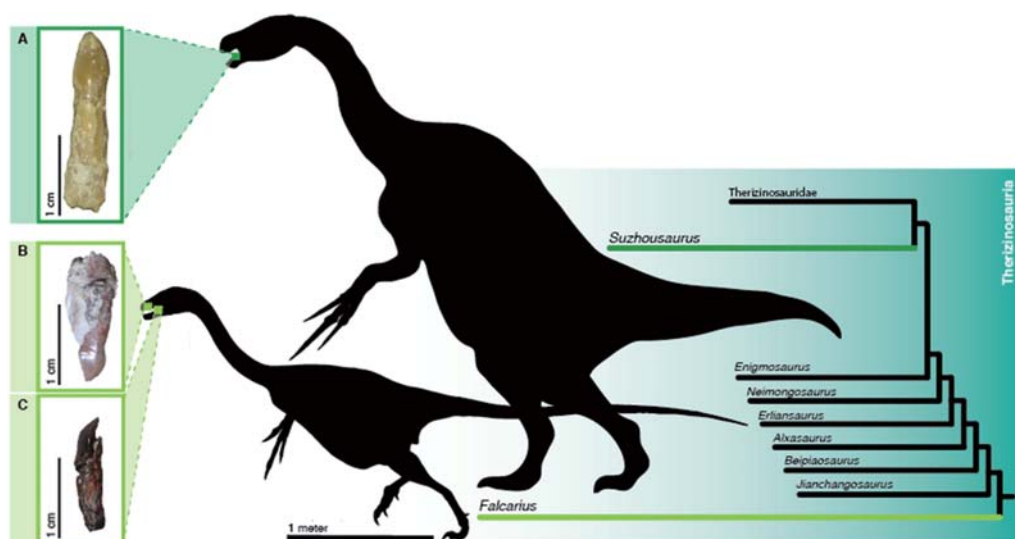


Figure 1 Teeth of sampled therizinosaurians. Isolated teeth of therizinosaurians pre- and post-sectioning. Location in the jaws and phylogenetic positions of therizinosaurians sampled is highlighted. (A) Dentary tooth of *Suzhousaurus megatherioides* in labial view. (B) *Falcarius utahensis* (UMNH VP 22857) maxillary tooth in labial view. (C) Dentary tooth of *Falcarius utahensis* (UMNH VP 15231) in mesial view. Silhouettes of a generalized early diverging and late diverging therizinosaurid modified from skeletal reconstructions published in *Kirkland et al. (2005; Greg Paul)* and *Zanno et al. (2009; Victor Leshyk)*. Scale bars = 10 μm , 100 μm , 1 cm, and 1 m.

Full-size DOI: [10.7717/peerj.4129/fig-1](https://doi.org/10.7717/peerj.4129/fig-1)

(DDR) is synonymous with mean VEL increment width (*sensu Erickson, 1996b*), and it is the amount of dentin (thickness, in μm) being laid down per day. Similarly, enamel apposition rate (EAR) is synonymous with LIG increment width (*sensu Line, 2000*). Unlike TGR and formation time, DDR and EAR are size-independent measures of the production and apposition/deposition of dental tissue that are not affected by variation in VEL count during the ontogeny of individual teeth prior to being shed from the jaw.

The complexity of the schmelzmuster tends to be reflected by the overall complexity of external tooth morphology (*Sander, 1999*). In some dinosaurian clades such as Hadrosauridae, the schmelzmuster is highly diagnostic, and phylogenetic signals can be read at the suprageneric level (*Sander, 1999; Sander, 2000*). In Theropoda, there is widespread homoplasy and the schmelzmuster is usually limited to a combination of parallel and columnar enamel, suggesting strong phylogenetic constraints (*Stokosa, 2005*). However, some functional signals may be present. It is hypothesized that parallel enamel is more resistant to stress from abrasive wear, whereas columnar enamel is structured to withstand torsional stress from bone crushing or prey capture (*Stokosa, 2005*). Columnar enamel is more often seen in hypercarnivorous theropods such as tyrannosaurids and dromaeosaurids (*Sander, 1999; Hwang, 2005; Hwang, 2011; Zanno & Makovicky, 2011*).

Sampling methodology

We sampled two isolated teeth (UMNH VP 22857 & 15231, a maxillary tooth and a dentary tooth, respectively) (*Figs. 1B* and *1C*) of *Falcarius utahensis* from the monodominant

Lower Cretaceous Crystal Geysir Quarry as well as an uncatalogued tooth referred to *Suzhousaurus megatherioides* collected from the Lower Cretaceous Yujingzi Basin of Gansu, China (Fig. 1A). Following Hwang (2005) and Hwang (2011), we prepared the teeth for microscopy by embedding them in 2-part epoxy and then polished them with fine grain 600–1,200 grit paper. We then cut the teeth in half in longitudinal section using a Buehler Isomet slow-speed saw. We polished the cut faces to remove saw marks, then affixed cut sides to glass petrographic slides using quick-setting epoxy. We made three longitudinal sections each from the *F. utahensis* and *S. megatherioides* teeth. We then polished the sections down to a thickness of approximately 0.1 mm. Using a digital caliper, we confirmed that the slides were of consistent thickness then etched each of the sections for between 30 and 60 s with 1 M hydrochloric acid (Hwang, 2011). The acid was then washed off with tap water. The amount of time for etching varied based on the thickness of the section.

To image the slides, we used a Jeol JSM-6010LA scanning electron microscope set to 20 kV for the *F. utahensis* samples and 5 kV for *S. megatherioides*. We vacuum-coated the slides with approximately 5 nm of Au-Pd to aid in conductance. Au-Pd was later removed with further polishing using 600–1,200 grit paper. We used a Nikon Eclipse Ci-POL petrographic microscope to examine growth lines in dentin. Digital images of VELs were taken and analyzed in ImageJ (Schneider, Rasband & Eliceiri, 2012). Sampling locations are highlighted in Fig. S1. For UMNH VP 22857 and the *Suzhousaurus* tooth, VELs were counted near the base of the crown, where the mineralization front of dentin was roughly parallel with the enamel–dentin junction (EDJ). Diagenetic alteration prevented this in UMNH VP 15231, and so a transect closer to the crown apex was used to count VELs in this tooth. Additional images were taken using a VHX-6000 Series Keyence digital microscope.

We calculated total crown volume for UMNH VP 22857 by approximating the tooth as an elliptic solid cylinder and used linear measurements collected in ImageJ. The volume of the pulp cavity was not accounted for due to lack of appropriate measurements. We then adjusted our volume estimate using a direct measurement of volume from UMNH 15231. Volumetric calculations of the remaining teeth were derived from high resolution (0.02 mm) three-dimensional surface scans captured with a Creaform EXAscan handheld scanner using VXelements 3D data acquisition software. Post-processing and generation of 3D models for volumetric calculations was conducted in Geomagic Studio. We calculated enamel volume by subtracting the volume of the tooth without enamel from the total crown volume. To calculate the volume of the tooth without enamel, we took a cylinder uniformly scaled down (geometrically similar but not congruent) from the original cylinder and inset it by the average enamel thickness. Average enamel thickness was calculated by taking the mean of enamel thicknesses, measured normal to the enamel–dentin junction (EDJ), from a transect of 15 regularly spaced points running apicobasally (7 from each side and one from near the tip) using ImageJ. Further linear measurements of crown height and total tooth length were taken for additional *F. utahensis* dentary teeth (UMNH VP 14527 and UMNH VP 15259) preserved *in situ* in the mandible (Fig. S2). Crown volumes for other, primarily carnivorous, theropods were also approximated as elliptic cylinders and were calculated using data from Hendrickx, Mateus & Araújo (2015b).

Dietary classifications and body mass estimates

Taxa were binned as being (1) primarily carnivores, (2) primarily herbivores. Therizinosaurians were considered a special case and were analyzed separately. We compensated for uncertain dietary classification in *Troodon* and *Eoraptor* by running multiple analyses classifying the taxa as first carnivores, then herbivores, and lastly by dropping them from our dataset. Body masses were taken from [Benson et al. \(2014\)](#). In instances where multiple mass estimates were available for a given taxon, the largest value was used (see [Table 1](#)).

Statistical analysis

We used a two-sided homoscedastic *t*-test to compare DDR in therizosaurs to that of other archosaurs. To compare crown volume:body mass ratios in Therizinosauria, we employed a Kruskal–Wallis test with permutation *p*-value. We then performed a Kruskal–Wallis multiple comparisons test. We used a Spearman’s rank correlation permutation test to examine the relationship between DDR and replacement rate. To target potential confounding factors, we compared DDR between matching pairs of juveniles and adults of the same species using 2-sided paired *t*-test. Published data from [Erickson \(1996b\)](#), D’Emic and colleagues (1993), Benson and colleagues (2014), [Hendrickx, Mateus & Araújo \(2015b\)](#), and Zanno and colleagues (2016). All tests were conducted in *RStudio Team (2009–2017)* 1.0.153. Permutation tests used 5,000 replicates.

RESULTS

Therizinosaurian teeth are folioid (sensu [Hendrickx, Mateus & Araújo, 2015a](#)) in form and are generally diminutive ([Fig. S2](#)) (but see [Zanno et al., 2016](#)), measuring no more than 9.0 mm in crown height and 3.8 mm in crown base length in our sample. Minute denticles are present on the distal carinae of teeth from both taxa. Folding of the carinae, seen in the therizinosaurid *Segnosaurus galbinensis* ([Zanno et al., 2016](#)), is not present in *F. utahensis* or *S. megatherioides*.

Falcarius utahensis

Gross description

Pre-sectioned total tooth lengths (crown and preserved root) were 14.752 and 13.301 mm; crown heights were 4.265 and 6.21 mm, respectively. This yields a mean root/crown height ratio of 2.78. Crown base widths were 2.184 and 2.500 mm and crown base lengths were 3.538 and 3.620 mm. There were no signs of wear on either tooth. The dentary tooth (UMNH 15231) was labiolingually constricted at the cervix (crown base ratio 0.62), and the crown was slightly distally and lingually recurved and ‘D’-shaped in cross-section. There was little crown ornamentation, but a lingual depression was present. The tip of the crown apex (sensu [Hendrickx, Mateus & Araújo, 2015a](#)) was missing.

The maxillary tooth (UMNH 22857) had a larger crown base ratio (0.69), as it was more constricted mesiodistally than labiolingually at the cervix. It was more strongly lingually recurved than the dentary tooth but less distally inclined. Its cross section was more lenticulate. It was mesiodistally expanded (mid-crown ratio 0.44) and bore a small longitudinal ridge (sensu [Hendrickx, Mateus & Araújo, 2015a](#)) on the lingual aspect.

Table 1 Crown volume and body mass in archosaurs. Taxa are categorized by diet and growth stage: Red, Primarily carnivorous; Green, Primarily herbivorous; and Gold, Unknown/omnivore. Lighter colors represent juvenile/sub-adult specimens. Therizinosaurians are in bold.

Taxon	<i>n</i>	Mean crown volume, mL	Body mass, kg	CV:BM ratio, mL/kg	Growth stage	Source
<i>Acrocanthosaurus</i>	34	16.23	3.50E+3	4.64E-03	NA	f
<i>Afrovenator</i>	1	11.97	1.00E+3	1.20E-02	?	f
Albertosaur	1	18	1.30E+3	1.38E-02	Adult	b
<i>Albertosaurus</i>	1	8.26	2.00E+3	4.13E-03	?	f
<i>Alioramus</i>	15	1.1	2.80E+2	3.91E-03	NA	f
<i>Alligator</i>	3	0.12	5.91	2.03E-02	Juvenile	a
<i>Allosaurus</i>	31	3.62	2.50E+3	1.45E-03	NA	f
<i>Aucasaurus</i>	2	2.13	8.50E+2	2.51E-03	NA	f
<i>Australovenator</i>	6	0.48	3.10E+2	1.55E-03	NA	f
<i>Bambiraptor</i>	10	0.01	4.00	2.62E-03	NA	f
<i>Carcharodontosaurus</i>	14	31.6	3.00E+3	1.05E-02	NA	f
<i>Carnotaurus</i>	4	2.05	1.60E+3	1.28E-03	NA	f
<i>Ceratosaurus</i>	16	6.31	5.00E+2	1.26E-02	NA	f
<i>Coelophysis</i>	20	0.02	9.00	2.31E-03	NA	f
<i>Daspletosaurus</i>	15	12.28	6.10E+2	2.01E-02	NA	f
<i>Deinonychus</i>	1	0.2	1.00E+2	2.00E-03	Adult	b
<i>Deinonychus</i>	12	0.12	9.70E+1	1.27E-03	NA	f
<i>Dilophosaurus</i>	4	3.02	2.90E+2	1.04E-02	NA	f
<i>Erectopus</i>	3	4.55	3.00E+2	1.52E-02	NA	f
<i>Fukuiraptor</i>	1	2.19	2.50E+2	8.77E-03	?	f
<i>Giganotosaurus</i>	7	28.28	6.10E+3	4.64E-03	NA	f
<i>Gorgosaurus</i>	17	4.8	2.50E+3	1.92E-03	NA	f
<i>Leidyosuchus</i>	1	1.2	2.15E+2	5.57E-03	?	b
<i>Liliensternus</i>	7	0.12	8.40E+1	1.45E-03	NA	f
<i>Majungasaurus</i>	1	1.58	1.60E+3	9.86E-04	?	f
<i>Mapusaurus</i>	7	11.4	4.10E+3	2.78E-03	NA	f
<i>Masiakasaurus</i>	22	0.05	2.00E+1	2.55E-03	NA	f
<i>Megalosaurus</i>	13	5.1	1.40E+3	3.64E-03	NA	f
<i>Neovenator</i>	3	2.25	1.00E+3	2.25E-03	NA	f
<i>Raptorex</i>	17	0.26	4.40E+1	5.94E-03	NA	f
<i>Saurornitholestes</i>	117	0.05	1.80E+1	2.99E-03	NA	f
<i>Skorpiovenator</i>	2	2.57	1.20E+3	2.14E-03	NA	f
<i>Suchomimus</i>	20	4.55	2.90E+3	1.57E-03	NA	f
<i>Torvosaurus</i>	4	31.57	2.40E+3	1.32E-02	NA	f
<i>Tyrannosaurus</i>	1	138	7.70E+3	1.79E-02	Adult	b
<i>Tyrannosaurus</i>	1	15.5	6.16E+3	2.52E-03	Sub-adult	b
<i>Tyrannosaurus</i>	1	1.8	1.00E+3	1.80E-03	Juvenile	b

(continued on next page)

Table 1 (continued)

Taxon	<i>n</i>	Mean crown volume, mL	Body mass, kg	CV:BM ratio, mL/kg	Growth stage	Source
<i>Tyrannosaurus</i>	131	41.26	7.70E+3	5.36E−03	NA	^f
<i>Velociraptor</i>	20	0.03	1.20E+1	2.47E−03	NA	^f
<i>Beipiaosaurus</i>	1	0.02	4.72E+1	3.57E−04	?	^c
<i>Camarasaurus</i>	?	15.7	4.70E+4	3.34E−04	NA	^c
<i>Diplodocus</i>	?	1.51	1.30E+4	1.16E−04	NA	^e
<i>Edmontonia</i>	1	0.2	3.00E+3	6.67E−05	Adult	^b
<i>Edmontosaurus</i>	2	2	3.00E+3	6.67E−04	Adult	^b
<i>Edmontosaurus</i>	3	0.43	7.00E+2	6.14E−04	Juvenile	^b
<i>Maiasaura</i>	1	1.9	3.60E+3	5.28E−04	Adult	^b
<i>Prosaurolophus</i>	3	2	4.50E+3	4.44E−04	Adult	^b
<i>Segnosaurus</i>	1	0.28	2.23E+3	1.25E−04	?	^d
<i>Suzhousaurus</i>	1	0.05	3.10E+3	1.76E−05	?	^c
<i>Triceratops</i>	2	2.65	9.00E+3	2.94E−04	Adult	^b
<i>Falcarius</i> (UMNH VP 15231)	1	0.02	1.00E+2	2.00E−04	Juvenile?	^c
<i>Falcarius</i> (UMNH VP 22857)	1	0.03	1.00E+2	3.41E−04	Juvenile?	^c
<i>Eoraptor</i>	26	0.01	1.70E+1	8.51E−04	NA	^f
<i>Troodon</i>	2	0.04	5.00E+1	8.00E−04	Adult	^b
<i>Troodon</i>	35	0.04	4.70E+1	9.30E−04	NA	^f

Notes.

^aErickson (1996a).^bErickson (1996b).^cThis paper.^dZanno et al. (2016).^eD'Emic et al. (2013).^fHendrickx, Mateus & Araújo (2015b).**Dental histology**

Polarized light microscopy revealed 38 VELs in UMNH VP 22857 (Fig. 2A) and 44 in UMNH 15231 (Fig. 2B). The mean increment width was 15.8 μm. Total crown volume (TCV) was 20.00 mm³ for UMNH 22857 and 34.10 mm³ for UMNH 15231. Maximum enamel thickness was 50 μm; average thickness was approximately 33.4 μm. Enamel on the occlusal and labial sides was twice as thick as the lingual aspect. Miniscule serrations, visible under a hand lens, were present on the distal carina. Calculated enamel volume averaged 0.70 mm³, making up 2.58% of TCV. The schmelzmuster of both was almost exclusively comprised of simple parallel crystallite enamel with no other enamel types present; however, a basal unit layer is discernible in UMNH VP 15231 (Fig. 2E). Clear, regularly-spaced LIGs (Figs. 2D–2F) were distributed from the EDJ to the OES. An average of 6.00 ± 1.53 LIGs were counted for UMNH VP 22857 (Fig. 2D) and 5.00 ± 0.71 LIGs for UMNH VP 15231 (Fig. 2E). Mean LIG increment width was 4.29 μm, which is comparable to that of a theropod tooth examined by Line (2000).

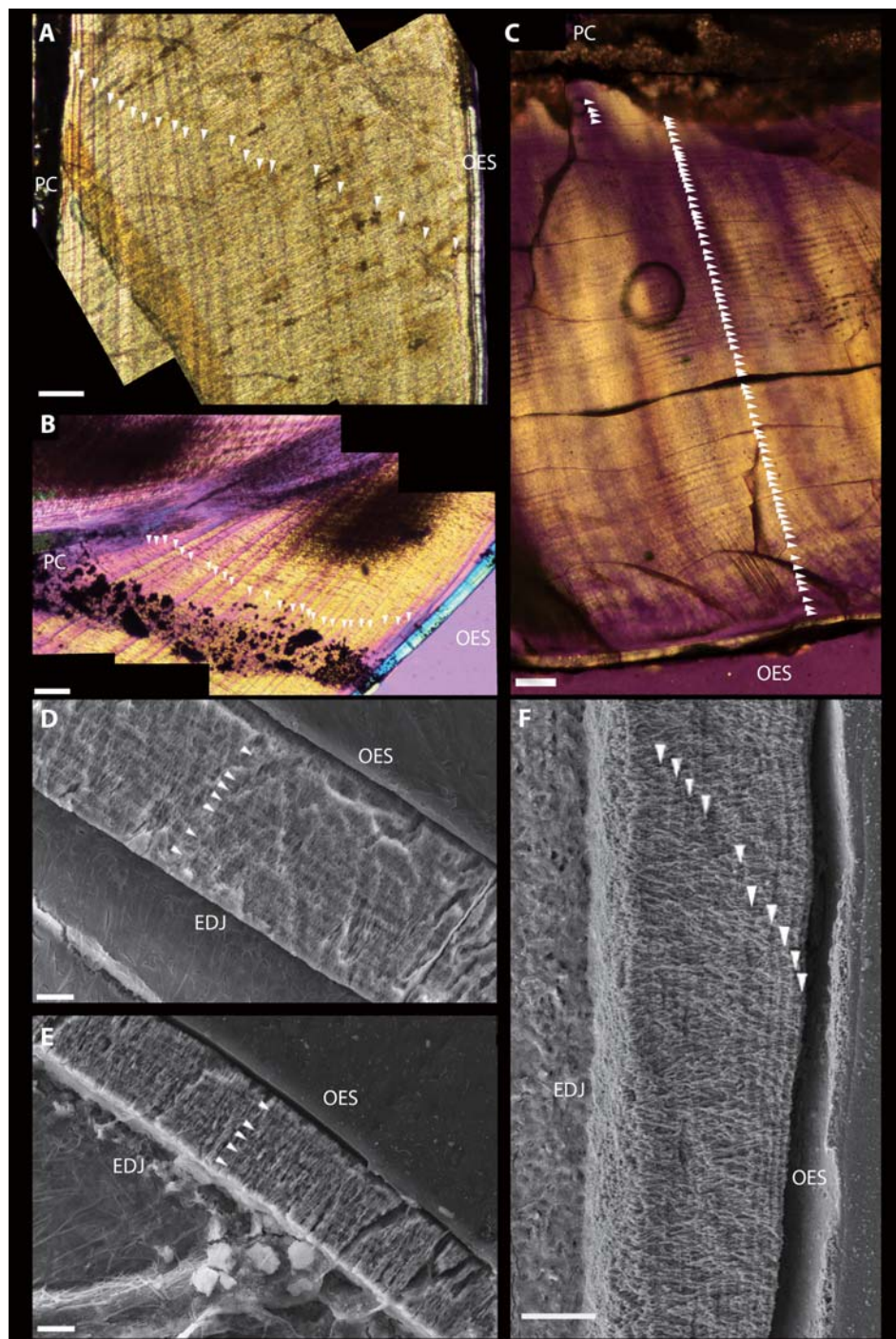


Figure 2 Dental microstructure in *Therizinosauria*. (A–C) Polarized light microscopy of longitudinally sectioned teeth. (A) UMNH VP 22857. Dentin preserves 38 VELs with a mean increment width of 13.54 μm . (B) UMNH VP 15231. Dental histology reveals 44 VELs with mean increment width 18.12. (C) *Suzhousaurus* tooth. 79 VELs with a mean increment width of (continued on next page...)

Full-size [DOI: 10.7717/peerj.4129/fig-2](https://doi.org/10.7717/peerj.4129/fig-2)

Figure 2 (... continued)

16.0 μm were visible in section. (D–F) Scanning Electron Microscopy images of longitudinally sectioned teeth. (D) Dental enamel of UMNH VP 22857. An average of 6.00 ± 1.53 LIGs were identified, with mean increment width 5.35 μm . (E) The enamel of UMNH VP 15231 preserves 5.00 ± 0.71 LIGs with mean increment width 3.495. Schmelzmuster of both *Falcarius* teeth consisted of parallel crystallite enamel only. (F) Schmelzmuster of *Suzhousaurus* enamel consists of slightly divergent parallel crystallite enamel. An average of 15.67 ± 5.70 LIGs were counted with a mean increment width of 2.06 μm . Incremental growth lines indicated with white arrows. Scale bars = 100 μm (A–C) and 10 μm (D–F). Abbreviations: EDJ, enamel–dentin junction; OES, outer enamel surface; PC, pulp cavity.

Suzhousaurus megatherioides**Gross description**

The tooth was conodont in form and more symmetrical (both mesiodistally and labiolingually) than the *F. utahensis* teeth, with only slight constriction (crown base width approximately equal to mid-crown width). A small lingual depression was present with a narrow longitudinal ridge flanked by distal and mesial longitudinal ridges. Its cross-section was subcircular. Pre-sectioned total tooth length was 2.10 cm (root plus crown), with a crown 0.881 cm in height yielding a root/crown height ratio of 2.38. Crown base length was 0.38 cm and crown base width was 0.27 cm. It was relatively more slender, with higher crown height ratio. Unlike in *F. utahensis* teeth, a shallow wear facet, only visible under hand lens, was present on the labial side of the tooth, near to the crown apex. Even prior to sectioning, the tooth was nearly translucent.

Dental histology

After polishing the sections down to 0.1 mm thick, the crown was completely transparent, and only the pulp cavity remained opaque. Microscopic denticles, not observed upon initial survey of external morphology, were visible in section on the lingual aspect immediately adjacent to the crown apex. Under polarized light microscopy, 79 VELs with a mean increment width of 16.0 μm were visible in section (Fig. 2C). Raw DDR data and VEL counts for *S. megatherioides* and *F. utahensis* are compiled in Table S1. Maximum enamel thickness was approximately 120 μm near the tip of the crown on the lingual side, and 90 μm on the labial side. The average thickness was approximately 40 μm . TCV was 54.69 mm^3 and total enamel volume was 2.94 mm^3 (5.37% TCV). The schmelzmuster also consisted of parallel crystallite enamel, but unlike *F. utahensis* the crystallites were slightly divergent. *S. megatherioides* teeth also possess LIGs parallel with the boundary of the OES, yet these were more numerous than *F. utahensis*. An average of 15.67 ± 5.70 LIGs were counted with a mean increment width of 2.06 μm (Fig. 2F). Enamel volume and apposition rate raw data is compiled in Table S2.

Statistical testing

DDR in therizinosaurs is not significantly different ($p = 0.323$) from that of other archosaurs and was not significantly correlated with replacement rate ($p = 0.3356$). DDR in adults was an average of 0.54 $\mu\text{m}/\text{day}$ greater than in juveniles, however this difference was not significant ($p = 0.55$) (Fig. 3). Mean crown volume to body mass ratios for therizinosaurs and other herbivorous dinosaurs were $1.84\text{E}-4$ and $3.83\text{E}-4$ ml per kg, respectively, whereas CV:BM ratio for hypercarnivorous archosaurs ($5.60\text{E}-3$ ml/kg) was significantly higher